



To:	ABSA	From:	Janet Townsend
Company:	Swagelok Company	Phone:	416-747-4291
Pages:	5	Location:	Toronto
Our File:	ANR-4977	Date:	June 15, 2018

Your File: 2017-07156

**Subject: Request Design Registration**

Ms. Formaniuk,

CSA has received the documentation submitted by ABSA on behalf of Swagelok Company. These fittings have been registered by CSA for the Province of Québec in accordance with an agreement between CSA and the Province of Québec.

The CRN is 0C18486.26 .

A copy of the Statutory Declaration with an original stamp affixed will be forwarded to you along with our invoice by regular mail.

Yours truly

A handwritten signature in cursive script that reads 'Janet Townsend'.

Janet Townsend  
Program Manager  
CSA Group

178 Rexdale Blvd.  
Toronto, ON, M9W 1R3  
Canada  
[www.csagroup.org](http://www.csagroup.org)

REGISTERED  
 CRN: 0C18486.26  
 Registration Process administered by  
 CSA Group per CSA B51

Statutory Declaration Registration of Fittings

(a) Design Qualification

I<sup>1</sup> Joel Feldman  
Vice President, Engineering  
*(Position eg. president, plant manager, chief eng.)*

Of Swagelok Company  
*(name of company)*

Located at Headquarters, 29500 Solon Road, Solon, Ohio 44139 USA (See Attachment A)  
*(plant address)*

do solemnly declare that the fittings listed hereunder, which are subject to the Boilers & Pressure Vessels Act:

- comply with all the requirements of the ANSI/ASME codes as to their dimensions, material, identification & service for which are required
- Or
- are not covered by the provisions of the ANSI/ASME codes, and are therefore constructed to comply with \_\_\_\_\_ code and standard, and are designed to the best current engineering practice, as shown by the supporting test data.

(b) Quality control of Manufacture

I further declare the manufacture of these fittings is controlled by a quality control program which complies with the requirements of ISO 9001:2015 and has been verified by the following authority or authorized agency BSI

The fittings<sup>2</sup> covered by this declaration, for which I seek registration, are Category C, Valves

In support of the application, the following information, calculations and/or test data are attached  
ISO 9001:2015 Certificate, Attachment A, Attachment B, Catalog Information and other Support Documents

Declared before me at Solon Jamie L. Ristau  
 Resident Portage County  
 Notary Public, State of Ohio  
 My Commission Expires: 03/06/2019  
 In the of State of Ohio  
 The 07th Day of May AD 19 2018  
Jamie L. Ristau Signature of Declarer<sup>1</sup>

For Official Use Only

The application is accepted for registration in Category C in accordance with the Boilers and Pressure Vessels Act and CSA Standard B51.

This registration must be revalidated after ten (10) years from the date of acceptance APRIL 11 2028

Registered Number CRN 0C18486.26 For the Chief Inspector A. BANWATT  
 Date June 13 2018

- 1 Three completed copies of Statutory Declaration form together with three copies of Catalogs, drawings of Bulletins illustrating above fittings shall be submitted.
- 2 All fittings are required to be registered in the name of the Manufacturer.
- 3 This form shall be completed and signed by the president of highest official in the manufacturing plant where the fitting is produced.

\*Note: See the attachment for the scope of the registration.



April 11, 2018

**Attention:** Jonathan Seeweld  
SWAGELOK COMPANY  
6565 DAVIS INDUSTRIAL PKWY STE A  
SOLON, OH 44139

Email: Jonathan.Seeweld@swagelok.com

The design submission, tracking number 2017-07156, originally received on November 14, 2017 was surveyed and accepted for registration as follows:

**CRN :** 0C18486.2

**Accepted on:** April 11, 2018

**Reg Type:** NEW DESIGN

**Expiry Date:** April 11, 2028

**Drawing No. :** ATTACHMENT B: SCOPE OF REGISTRATION DATED NOVEMBER 10, 2017 As Noted

**Fitting type:** MONOFLANGE VALVE ASSEMBLIES (MN SERIES)

Design registered in the name of : SWAGELOK COMPANY

**The registration is conditional on your compliance with the following notes:**

*The scope of this registration is for monoflange valve assemblies (MN Series) as per Attachment B, Scope of Registration, Pages 1 and 2, dated November 10, 2017. Attachment B includes the material, configurations, classes, sizes, and pressure-temperature ratings. The pressure-temperature ratings are further defined in the Code Comparison Summary document.*

*This registration includes fifteen manufacturing locations as per Attachment A.*

*As per your email on April 11, 2018 the code of construction is ASME B31.3 only. ASME B31.1 is not included as a code of construction. A note has been added to the AB-41 Statutory Declaration form and scope of registration indicating this.*

*As per our phone conversation on November 28, 2017 the A182-F316/F316L material is dual graded.*

*This design has been reviewed and accepted based on compliance with the following note for the bonnet A351-CF8M material:*

*- B31.3 Table A-1, Note (27): For temperatures above 427 °C (800 °F), these stress values apply only when the carbon content is 0.04% or higher.*

*The end connections (CRN 0A12577.52) shall be suitable for the conditions of the intended service.*

*The following catalog was provided for reference only: Process Interface Valves, MS-02-340 Rev K, pages 729 to 733 and 745 to 451.*

1 OF 2

ATTACHMENT TO  
C.R.N. 0C18486.26  
Signed: [Signature]  
178 Rendelo Boulevard, Toronto, ON Canada M9W 1R3

## Attachment B. Scope of Registration for Swagelok MN Series Process Monoflanges (Category C)

### Product Scope

This document represents the scope of Swagelok MN Series Process Monoflanges covered by this submission for CRN approval. These products were designed and evaluated in accordance with ~~ASME B31.1~~ and ASME B31.3 as unlisted components.

### Summary Table

*Code of construction is B31.3 only UR*

The below table holds true for:

- MN02 Outside Screw & Yoke Series
- MN03 Integral Screwed-Bonnet Needle Valve Series, and
- MN04 Bolted-Bonnet Needle Valve (Primary Bloc) Series

Body Material/ Specification	Configuration	ASME Class	Flange Size	Minimum Temperature	Maximum Working Pressure (psig) <sup>1</sup>	
					At 70°F	At 300°F
F316/F316L ASTM A182	Block Valve	150	1/2 in. (DN 15)	-58°F	6000	4660
	Block and Bleed Valve	300/600	3/4 in. (DN 20)			
		900/1500	1 in. (DN 25)			
	Double Block and Bleed	2500	1 1/2 in. (DN 40)			
			2 in. (DN 50)			

- 1) Maximum temperature: PTFE Packing 400°F, Graphite Packing 850°F,
- 2) All seat and seal combinations
- 3) All flange types: RF smooth, RF serrated, and RTJ
- 4) Outlet connection: 1/2 in. female NPT, Monoflange wafer (thru holes)
- 5) Bleed connection: 1/4 in. female NPT, 1/2 in. female NPT, or none

**ABSA**

SAFETY CODES ACT - PROVINCE OF ALBERTA  
REGISTRATION OF FITTINGS

REGISTRATION NO. 0C18486.2

DWG. NO. or CAT. NO. Attachment B

TYPE OF FITTINGS Valve Assemblies

**APR 11 2018**

Date INITIALS Keith Rudolf  
KEITH RUDOLF, P.Eng.  
DESIGN SURVEY ENGINEER

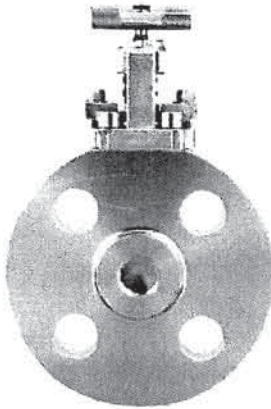
*As Noted*



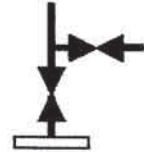
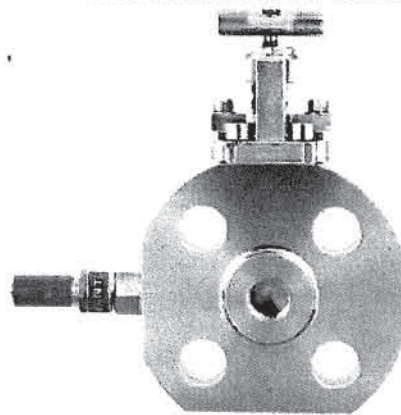
**\*See Acceptance Letter for the comments and/or conditions of registration\***

## Product Drawings/Configurations

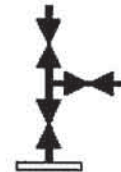
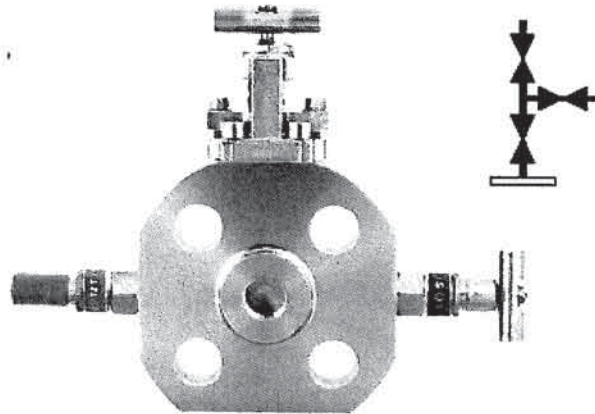
**Block Valve**



**Block and Bleed Valve**



**Double Block and Bleed Valve**



0018486.2

APR 11 2018

### Typical Product Characteristics:

The list below shows examples of product options which do not affect the pressure-temperature ratings shown in the above Summary Table. All of the following options are within the scope of this registration:

- Bar Handles (available for block valves and bleed valves)
- Handwheel Handles (for block valves)
- Antitamper bleed valve
- Sour gas service

### Quality System

The Swagelok Company quality system complies with the requirements of BS EN ISO 9001:2008. The Swagelok Company maintains British Standards Institution Certificate of Registration Number FM 01729, which applies to all locations listed on the Certificate.

### Special Ordering Instructions

None

### References

The product catalog does not represent the full scope of registration, but rather details some of the most common options.

- Swagelok Process Interface Valves MS-02-340, R10